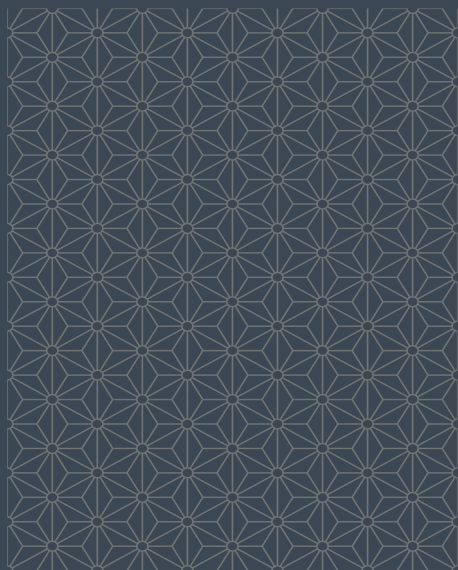




INSPIRE HOMES

BONDS RANCH



EMBRACE THE CHARM



OUR NEIGHBORHOOD

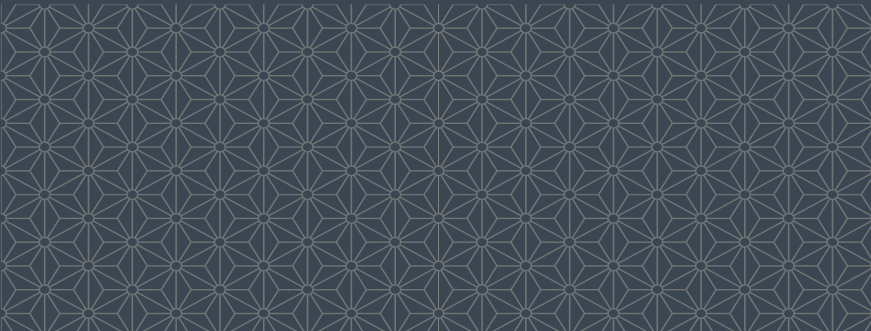


North Fort Worth is home to some of the fastest growing suburbs in the area, making it desirable for both families and individuals alike. This thriving neighborhood offers residents access to abundant green spaces, a vibrant local food scene, top-rated schools, and more. It's the perfect blend of urban and suburban living. Conveniently located near Alliance Town Center and major routes such as Interstate 35W and Highway 287, Inspire Homes Bonds Ranch provides a lifestyle of ease and connectivity, reducing commute times and offering seamless access to the best of Fort Worth.





Inspire Homes Bonds Ranch's spacious two and three-bedroom single-family townhomes are available in one and two-story layouts to suit your family's needs. Embrace the charm of our farmhouse-style residences, boasting contemporary finishes, private backyards, and other essential features that set our brand-new rental home community apart as the premier living destination in the surrounding Fort Worth area.



ELEVATE YOUR LIFESTYLE

Welcome to Inspire Homes Bonds Ranch, where we understand your desire to experience relaxed living in a new home within a prime location. Our brand-new community offers single-family townhomes with all the amenities that you've come to expect from a stress-free apartment living experience. Whether you're unwinding on the pool deck, staying active in our fitness center, or enjoying family time at the playground, our amenities are crafted to complement each of our resident's unique needs. Come home to Bonds Ranch's newest build-to-rent community.



AMENITIES

Whether you're freshly starting your career, a new family, or thinking of retirement soon, Inspire Homes Bonds Ranch single-family townhomes for rent have community amenities and modern home features with you in mind.

COMMUNITY

- Onsite maintenance
- Fitness center, open 24/7
- Pool deck with hot tub, gazebo, BBQ grills & plenty of lounge seating
- Resident lounge & social gathering spaces
- Large pet park with agility equipment
- Playground

HOME FEATURES

- Modern farmhouse-style townhomes
- 2 & 3 bedroom floorplans in 1 & 2 story layouts
- Ample front-entry parking
- Fenced-in private yards
- Stainless steel appliances
- Ceiling fan in bedroom & living room
- Blinds on all windows and patio doors
- Wood-style flooring in living, kitchen & bathrooms
- Modern lighting and premium fixtures
- Quartz countertops
- Tile backsplash in kitchen
- Carpet in bedrooms & closets **
- Full-size washer & dryer

****Depends on 1 & 2 Story**





INSPIRE HOMES

BONDS RANCH



10200 Mapleshade Ln
Fort Worth, TX 76177
817.385.8199
inspirehomesbondsranh.com

